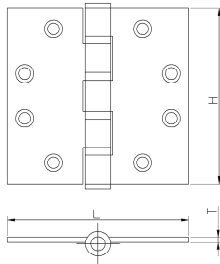


Nippi



Satin Stainless Steel (SS) , with 2 Ball Bearings



BLISTER PACK as above is also available

PLAIN, WITHOUT BALL BEARING

Model No.	Dimension(H x L x T)
SS202020	2.0" x 2.0" x 2.0mm
SS252520	2.5" x 2.5" x 2.0mm
SS303020	3.0" x 3.0" x 2.0mm
SS353520	3.5" x 3.5" x 2.0mm
SS403020	4.0" x 3.0" x 2.0mm
SS404020	4.0" x 4.0" x 2.0mm
SS303025	3.0" x 3.0" x 2.5mm
SS353525	3.5" x 3.5" x 2.5mm
SS403025	4.0" x 3.0" x 2.5mm
SS404025	4.0" x 4.0" x 2.5mm
SS505025	5.0" x 5.0" x 2.5mm
SS353530	3.5" x 3.5" x 3.0mm
SS403030	4.0" x 3.0" x 3.0mm
SS404030	4.0" x 4.0" x 3.0mm
SS505030	5.0" x 5.0" X 3.0mm

WITH BALL BEARINGS

Model No.	Dimension(H x L x T)
SS303020 2BB	3.0" x 3.0" x 2.0mm
SS353520 2BB	3.5" x 3.5" x 2.0mm
SS403020 2BB	4.0" x 3.0" x 2.0mm
SS404020 2BB	4.0" x 4.0" x 2.0mm
SS303025 2BB	3.0" x 3.0" x 2.5mm
SS353525 2BB	3.5" x 3.5" x 2.5mm
SS403025 2BB	4.0" x 3.0" x 2.5mm
SS404025 2BB	4.0" x 4.0" x 2.5mm
SS505025 2BB	5.0" x 5.0" x 2.5mm
SS353530 2BB	3.5" x 3.5" x 3.0mm
SS403030 2BB	4.0" x 3.0" x 3.0mm
SS404030 2BB	4.0" x 4.0" x 3.0mm
SS505030 2BB	5.0" x 5.0" X 3.0mm

Above mentioned sizes and finishes are also available in "STEEL MATERIAL"



Satin Stainless Steel (SS)



Polished Stainless Steel (PSS)



Antique Brass (AB)



Antique Copper (AC)



Gold Plated (GP)

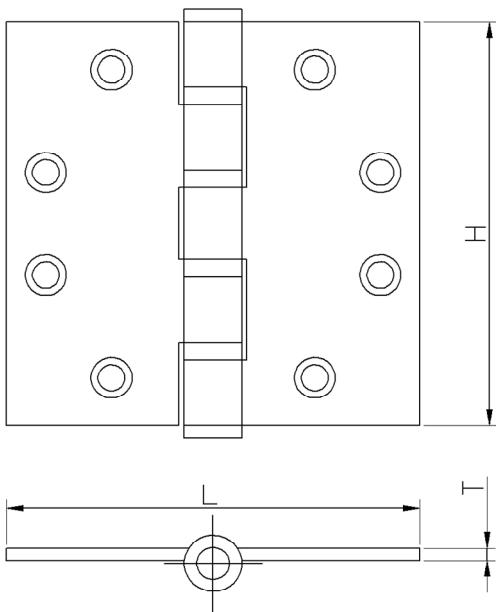


Dark Amber (10B)

Nippi



Polished and lacquered (P&L) with 2-Ball bearings



PLAIN, WITHOUT BEARING

Model No.	Dimension(H x L x T)
SB403020	4.0" x 3.0" x 2.0mm
SB403025	4.0" x 3.0" x 2.5mm
SB403028	4.0" x 3.0" x 2.8mm
SB403530	4.0" x 3.5" x 3.0mm
SB403030	4.0" x 3.0" x 3.0mm
SB404030	4.0" x 4.0" x 3.0mm

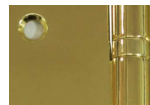
WITH 2-BALL BEARINGS

Model No.	Dimension(H x L x T)
SB403020 2-BB	4.0" x 3.0" x 2.0mm
SB403025 2-BB	4.0" x 3.0" x 2.5mm
SB403030 2-BB	4.0" x 3.0" x 3.0mm
SB404030 2-BB	4.0" x 4.0" x 3.0mm
SB454035 2-BB	4.5" x 4.0" x 3.5mm
SB454535 2-BB	4.5" x 4.5" x 3.5mm

WITH 4-BALL BEARINGS

Model No.	Dimension(H x L x T)
SB403020 4-BB	4.0" x 3.0" x 2.0mm
SB403025 4-BB	4.0" x 3.0" x 2.5mm
SB403030 4-BB	4.0" x 3.0" x 3.0mm
SB404030 4-BB	4.0" x 4.0" x 3.0mm
SB454035 4-BB	4.5" x 4.0" x 3.5mm
SB454535 4-BB	4.5" x 4.5" x 3.5mm

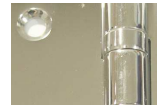
AVAILABLE FINISHES



Polished and lacquered (P&L)



Satin Brass (SB)



Chrome Plated (CP)



Antique Brass (AB)



Antique Copper (AC)

AVAILABLE TIPS



FT



AT



BT



CT



PT2



PT3



GT



ST



PT1